

System 3D Ultra Thick Acrylic



In order to meet the demand for a student range of textured, oil-like acrylic colours, Daler-Rowney has introduced System 3D acrylic colours in 2005. The full range comprises 24 colours in 225ml tubes; with the colours broadly reflecting similarly named colours in the System 3 range. There are no heavy metal pigments included in the formulations and none of the colours carry a warning for health or environmental effect. The colours are nevertheless fully intermixable with System 3 colours, Cryla colours and acrylic mediums.



Experts in acrylics

In 1963 George Rowney and Company became the first UK manufacturers of Artist Acrylic colours when they launched Cryla Heavy Bodied Acrylics. At the time acrylic colours were viewed with a degree of caution. After all, the previous major development of artist colours was oils, an event that took place over 500 years beforehand!

Cryla was first seen as an alternative to oils, but it soon became clear that acrylic was a media that allowed for creative uses in its own right. Leading contemporary artists appreciated the rapid drying characteristics of the bright, clean colours, coupled with ease for cleaning brushes and utensils without the use of solvents.

As acrylic media gained greater credibility among artists it became clear that a more cost effective alternative was required for amateur artists. In 1987 Daler-Rowney introduced System 3 acrylic colours, a more free-flowing range of acrylics at a lower price than Cryla. System 3 is now the market leader for student quality acrylic colours across the world.



Features and benefits of System 3D

All colours in the System 3D acrylic colour range have a uniquely 'buttery' consistency. A palette knife mark or brush stroke will remain as a well-defined peak or ridge. A hog hair brush, such as the Daler-Rowney Bristlewhite or Georgian brushes, is best suited to a technique where brush marks are required in a finished painting. For other effects consider using System 3 brushes, Cryla brushes or Dalon brushes (see separate broadsheets on the various brush ranges available from Daler-Rowney).

Whereas Cryla and System 3 dry to an eggshell matt finish, the System 3D colours dry to an oil-like gloss. Unlike oil colours, of course, the System 3D colours are water-soluble when wet, but dry to a waterproof finish. Colours can be over-painted or glazed immediately they have dried.

System 3D colours are suitable for painting on any semi-porous surface that is grease and dirt free. Typically the colours are used on paper and canvas, but are perfectly suitable for painting on brickwork, plaster, hardboard, MDF and fabrics if the surfaces are primed first with Daler-Rowney White or Black Gesso Primer. System 3D colours can even be applied to difficult surfaces such as laminated plastics, glass, or glazed ceramics, if the surfaces are first abraded, etched, roughened and/or suitably primed. Please feel free to consult the technical department at Daler-Rowney if you need advice on any project you are undertaking.

System 3D attributes

- Acrylic colours with an oil-like heavy, buttery consistency
- Acrylic colours that dry with an oil-like gloss
- Ideal for impasto work
- Looks like oil but cleans with water
- Ideal for schools and colleges, no solvents required
- Fully dry within 24 hours (depending on thickness)
- Water resistant, suitable for outdoor use
- Strong and vibrant colours
- Ideal for art and craft
- Enjoyable and fun to use
- Unique texture and body that holds its shape and brush marks
- Helps create texture and motion to art work



651 Lemon Yellow *** T	675 Process Yellow *** T	620 Cadmium Yellow (hue) *** T	618 Cadmium Yellow Deep (hue) *** T	619 Cadmium Orange (hue) *** S
503 Cadmium Red (hue) *** S	513 Crimson *** S	412 Process Magenta *** T	406 Cobalt Violet (hue) *** S	123 Ultramarine *** S
110 Cobalt Blue (hue) *** O	112 Coeruleum (hue) *** O	120 Process Cyan *** T	382 Viridian (hue) *** T	335 Emerald *** S
375 Sap Green *** T	024 Buff Titanium *** O	663 Yellow Ochre *** S	221 Burnt Sienna *** T	223 Burnt Umber *** T
065 Paynes Grey *** O	036 Mars Black *** O	006 Zinc Mixing White *** S	009 Titanium White *** O	

These colours may not be an exact representation of the actual tube colour.



You can't beat the System



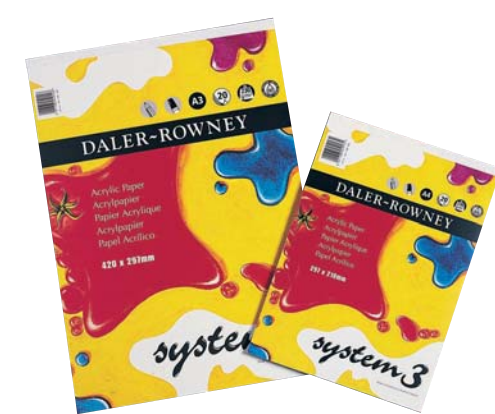
System 3 Colours
A high quality, versatile range of free flowing acrylics, ideal for arts, craft, the amateur and professional. Available in 48 colours.

System 3 Brushes
System 3 brushes have a balanced handle design and are made from carefully selected, dark tipped, synthetic filaments that offer durability and great colour holding at an affordable price.

System 3 Acrylic Printing Medium
Specially formulated for use with System 3 Acrylic colours. Highly economical, low odour, water based screen-printing ink. Regarded as the finest of its kind.

System 3 Brushes
System 3 brushes are available in assorted sets and individually.

System 3 Pads
Contains acid free paper suitable for acrylic painting. Available in assorted sizes.



DALER-ROWNEY

Daler-Rowney Ltd Bracknell
Berkshire RG12 8ST England
Telephone +44 (0)1344 461 000
Fax +44 (0)1344 486 511

Daler-Rowney USA 2 Corporate Drive
Cranbury New Jersey 08512 9584
Telephone +1 609 655 5252
Fax +1 609 655 5852

Daler-Rowney SA Rue des Technologies
No. 4 B-1340 Ottignies Belgium
Telephone +32 10 452 545
Fax +32 10 452 241

www.daler-rowney.com

Colour # No.	Colour Name	Pigment Name	C.I. Name	C.I. No.	Permanence	Transparency
* 651	Lemon Yellow	Arylamide Yellow 10G	PY3	11710	***	Transparent
675	Process Yellow	Arylamide Yellow 5GX Arylamide Yellow 10G	PY74 PY3	11741 11710	***	Transparent
* 620	Cadmium Yellow (hue)	Arylamide Yellow 5GX Diarylamide Yellow	PY74 PY83	11741 21108	***	Transparent
618	Cadmium Yellow Deep (hue)	Arylamide Yellow	PY1:1	11680	***	Transparent
* 619	Cadmium Orange (hue)	Diarylamide Yellow Diarylamide Orange	PY83 PO34	21108 21115	***	Semi-Opague
* 503	Cadmium Red (hue)	Naphthol Red AS - D Naphthol Red 1TR	PR112 PR5	12370 12490	***	Semi-Opague
* 513	Crimson	Quinacridone Naphthol Red 1TR	PR122 PR5	73915 12490	***	Semi-Opague
* 412	Process Magenta	Quinacridone	FR122	73915	***	Transparent
406	Cobalt Violet (hue)	Dioxazine Purple Quinacridone	PV23 FR122	51319 73915	***	Semi-Opague
* 123	Ultramarine	Ultramarine Blue	PB29	77007	***	Semi-Opague
* 110	Cobalt Blue (hue)	Ultramarine Blue Titanium Dioxide	PB29 PW6	77007 77891	***	Opague
112	Coeruleum (hue)	Lithopone Phthalocyanine Blue Bismuth Vanadate	PW5 PB15:3 PY184	77115 74160 -	***	Opague
* 120	Process Cyan	Phthalocyanine Blue	PB15:3	74160	***	Transparent
* 382	Viridian (hue)	Phthalocyanine Green	PG7	74260	***	Transparent
335	Emerald	Arylamide Yellow 10G Phthalocyanine Green	PY3 PG7	11710 74260	***	Semi-Opague
* 375	Sap Green	Arylamide Yellow 5GX Phthalocyanine Green Trans. Red Iron Oxide	PY74 PG7 PR101	11741 74260 77015	***	Transparent
024	Buff Titanium	Titanium Dioxide	PW6	77891	***	Opague
* 663	Yellow Ochre	Yellow Iron Oxide	PY42	77492	****	Semi-Opague
* 221	Burnt Sienna	Trans. Red Iron Oxide Red Iron Oxide	FR101 FR101	77015 77491	****	Transparent
* 223	Burnt Umber	Trans. Red Iron Oxide Carbon Black	FR101 PBk7	77015 77266	****	Transparent
* 065	Paynes Grey	Ultramarine Blue Mars Black	PB29 PBk11	77007 77499	***	Opague
* 036	Mars Black	Mars Black	PBk11	77499	****	Opague
* 006	Zinc Mixing White	Lithopone	PW5	77115	***	Semi-Opague
* 009	Titanium White	Titanium Dioxide	PW6	77891	***	Opague

* Colours available in the UK

- All colours are extremely permanent and lightfast
- All colours have permanence ratings of 3 to 4 stars, which means they have good resistance to fade. What you paint now will remain fresh and strong for years to come!
- All colours available in 225ml tubes

Samples 1 and 2
System 3D mixed with Quartz (1) and Pumice Stone (2). Very easy to mix and excellent colouring power.

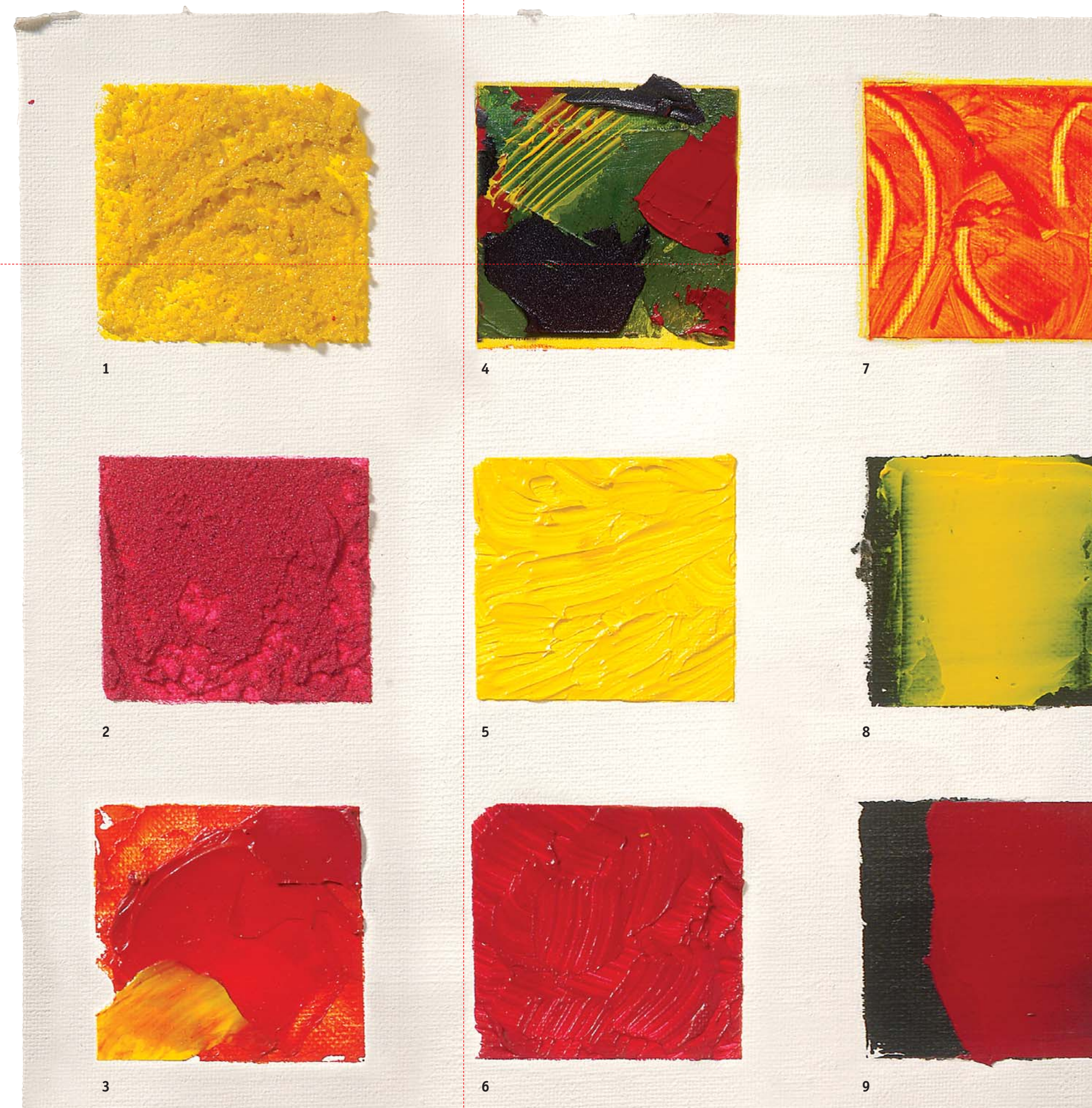
Sample 3
Excellent mixing capabilities, enabling quick and easy application.

Sample 4
System 3D has excellent covering power. Ideal for impasto techniques and textured effects.

Samples 5 and 6
Create perfect brush marks. Try different sizes of brush and create different effects by twisting, dabbing or stroking with the brush.

Sample 7
Shape retention is excellent. Use the other end of the brush to remove top layers, revealing the paint underneath.

Samples 8 and 9
System 3D spread with a knife. Colours are strong and intense. Try it on a black background.





Caribbean Market
by Soraya French

Tip:
The texture on the baskets has been painted using a palette knife and lots of System 3D colours in lighter and darker tones within the basket. I like the tactile feel that System 3D colours allow me to achieve using either a brush or a palette knife.

- Caribbean Market uses the following System 3D Acrylic colours**
- Titanium white
 - Ultramarine
 - Crimson
 - Yellow Ochre
 - Burnt Umber
 - Cadmium Orange
 - Lemon Yellow
 - Payne's Gray



Tip 2:

I like the tactile feel of a textured painting and find that the System 3D colours allow me to achieve this using either a brush or a palette knife. Use texture in a few selected places only or it can make the painting too busy.

Tip 3:

Using flat brushes for most of the time will prevent the artist to be too detailed too soon, and makes a more loose and free style of painting.



Apple in Dimension
by Christine Rogers

Tip:
Just apply colours straight from the tube with a knife or brush for clean crisp effects.

If you make a mistake, scrape it off and start again!

Use a cranked blade knife to work away from the surface.



Venice
by Dee Cowell

Tip:
To load the palette knife, first mix up the colour you need, then load the head of the knife on one edge only, so that you get a roll of colour. Use this to create edges and ridges, then wipe off the excess colour from the knife and re-load the knife.

System 3D is so versatile you can achieve the same palette knife techniques as with oil colours. System 3D does not dry out too fast, so you have time to manipulate your artwork.



Caribbean market in detail

These colours have a wonderful creamy consistency, which allow the artist to create a fantastic range of textures within a painting. They dry to a vibrant and glossy finish.

Tip 1:
In this painting I have applied a layer of Yellow Ochre with a large flat brush to the whole surface to create a sunny atmosphere. I have intentionally used an uneven layers of paint to end up with a more interesting background to the painting. To do this I loaded a flat brush with lots of colour and then dipped the brush in water and dragged down more transparent passages.

The finishing touch

Mediums

System 3D colours are fully intermixable with all Daler-Rowney Acrylic Mediums (see separate broadsheet). Impasto Gel Medium Matt and Gloss will increase the transparency of System 3D colours whilst retaining their consistency for palette knife and brush stroke of artwork. Adding Glaze Medium Gloss or Glaze Medium Matt to System 3D colours will reduce the viscosity or 'thickness' of the colours. The Matt mediums move the colours to a more egg-shell matt finish whereas the gloss level rises when Gloss mediums are used.

Mediums give versatility to acrylic colours and allow an opportunity to alter the transparency and viscosity of acrylic colours. Sometimes mediums provide solutions to problems an artist may be experiencing in creating a particular effect. Why not seek the expert help at Daler-Rowney? The chemists at Daler-Rowney are more than happy to advise on the most appropriate medium to use.

Varnishing

A painting finished with System 3D colours is very durable. There are, however, many small holes and crevices in the surface of the painting so dirt entrapment over time is likely. Most of this dirt can be cleaned off with soapy water (and then rinsed) but some will remain embedded in the surface of the painting. It may be prudent, therefore, to varnish a painting with either Daler-Rowney Acrylic Soluble Gloss Varnish or Acrylic Soluble Matt Varnish or a blend of the two, depending on the required degree of matt finish. Artist Clear Picture Varnish is an alternative varnish to Acrylic Soluble Varnish, also available in an aerosol can.

Daler-Rowney Acrylic varnishes and Artist Picture Varnish are slightly soft and will be less durable than harder outdoor varnishes, such as Polyurethane varnish. The choice of varnish, or even whether to leave the painting unvarnished, should be based on a consideration of the conditions to which the painting is exposed and how the painting will be maintained. Acrylic Soluble Gloss and Matt Varnishes and Picture Varnish are removable so dirt can be taken off the surface by removing the varnish. A Polyurethane varnish is more durable to outdoor



Impasto and Glaze Mediums
Impasto Gels and Glaze Mediums are available in Matt and Gloss, in 75ml, 250ml and 1 litre pots.

Soluble Gloss and Matt Varnish
Soluble Varnish is available in Matt and Gloss, in 75ml and 300ml bottles.

conditions but cannot be removed and some Polyurethane varnishes give a yellow tint to the finished painting. It is worthwhile testing for this yellowing effect on a separate piece of paper, particularly over blues and white.

Cleaning System 3D colours from brushes, utensils and clothes.

Wet System 3D colours can be cleaned from brushes and other equipment using water alone, although the high strength of colours may lead to some residual staining.

Like all acrylic colours, it is extremely difficult to clean dry acrylic colour from brushes and clothes. It is recommended that measures be taken to prevent the colour drying in brushes or on clothes. Wash unwanted colour from brushes during use, keep all furniture covered, laying newspaper on table tops, and wear old clothes or smocks.



Sun Day Fish
by Cathy Carey

Tip:
Build up layers on layers and you will see how fun it is to play! System 3D is much like oil, without the wait!



Daler-Rowney extends special thanks to:

- Ian Dugdale - Head of Art Department, Bradford College, Berkshire, UK
- Phillippe Hardel
- Dee Cowell
- Cathy Carey
- Christine Rogers